

Study of the Relation between the Inorganic and Organic Material in the Air Pollution of the City of Caxias do Sul

V. Villas-Boas¹, L. Moratelli¹, I. Nascimento¹, R. M. Dallago², R. Dellanora²,
A.L. Loureiro³ and P. Artaxo³

¹Departamento de Física e Química, Centro de Ciências Exatas e Tecnologia,
Universidade de Caxias do Sul

²Departamento de Química, Universidade Regional Integrada do Alto Uruguai e das
Missões-Campus de Erechim

³Grupo de Estudos de Poluição do Ar do Instituto de Física, Universidade de São Paulo

The main objective of this work was the semi-quantitative evaluation of the influence of the concentrations of fine and coarse particulate matter (PM_{2.5} and PM₁₀) and black carbon (BC) on the organic compound concentrations in the atmosphere of Caxias do Sul, a city in Rio Grande do Sul, the southernmost state of Brazil. The collection of the samples was carried out between August of 2006 and January of 2007. The periodic replacement of the cartridges and sampling filters was performed every other day (48 h sampling). An active sampler was used for the collection of the inorganic particulate matter, that means, PM_{2.5} and PM₁₀ were sampled using stacked filter units that collect fine ($d < 2.5 \mu\text{m}$) and coarse ($2.5 \mu\text{m} < d < 10 \mu\text{m}$) particulate matter. The organic material was collected by a previously treated cotton cartridge. Both samplings (inorganic and organic matter) were performed at the same time and sampling point, with division of the air flux. The air was forced to pass through the two samplers by a vacuum pump. The inorganic particulate matter was characterized by gravimetry and reflectance. The tentative identification of the organic compounds was obtained by gas chromatography with mass spectrometry detection (GC-MS). The preliminary results suggest an inverse relation among the PM₁₀ concentration and the amounts of some organic compounds like 1H-indene, neridol and ethylphthalate. On the other hand, the maximum quantity of eburnamonine was detected at the same time as the maximum concentrations of BC. No correlations were found between the PM_{2.5} concentrations and the amounts of organic compounds, in the samples studied.

1. Introduction

In an urban area, in addition to the natural components present in the troposphere, pollutant or not-pollutant particles and gases are launched into the atmosphere, that, under different meteorological conditions, such as pressure, temperature, humidity and solar radiation, suffer reactions forming other pollutants that are added to those already emitted. These additional substances contribute to the aggravation of the pollution. The volatile organic compounds (VOCs) and the pollutant gases present in the atmosphere, coming from vehicles and/or industries, can be toxic to the health of the population and harmful to the environment (Macchione et al., 1999; Castanho and Artaxo, 2001; Vasconcellos et al., 2005; Alves et al., 2006).

Cities like Caxias do Sul usually attract many visitors and are attractive for the migration of inhabitants of other cities, that hope to find there, among other things, a pleasant climate and the healthful air characteristic of mountain cities. However, currently, not even cities considered environmentally healthful can be free of significant environmental contamination, mainly in regard to air quality. Caxias do Sul is situated between 760 and 800 m above sea level, at a latitude – 29.168° and a longitude – 51.179°, with an area of 1,558.4 km², and a subtropical climate. Caxias do Sul is the second metalworking center of the country and the most important one in the state of Rio Grande do Sul. It has a population of about 400,000 inhabitants and had, in 2001, according to the data of the Brazilian Institute of Geography and Statistics (IBGE) more than 4,000 transformation industries. Each inhabitant generates between 1 and 1.5 kg of solid residues per day. Still according to IBGE, in 2001 the fleet of automobiles was about 150,000 vehicles. On account of this increased growth, on some days of the year, it is already possible to see signs of thermal inversion layers (with dense fog formation) and, at some points in the city, awkward odors occur, probably the result of increased urbanization.

Although the signs of atmospheric pollution are already apparent and, at the academic level, there already exists an increasing interest in the evaluation of the level of atmospheric pollution in the city, up to the present moment, no study has been carried out in this direction. In this context, this work presents a semi-quantitative study of the main organic and inorganic pollutants present in the atmosphere of Caxias do Sul, mainly those that can be associated with automotive and industrial emissions.

2. Experiment

2.1 Choosing the Sampling Point

Our air collection equipment was installed at the José Gazola School of Professional Education (SENAI) in the São José neighborhood. This neighborhood is known mainly for its intense industrial activity and also for the existence of a branch of the Enrique Luis Roessler State Foundation for Environmental Protection (FEPAM). In general, FEPAM carries out SO₂ and O₃ analyses via ultraviolet fluorescence and PM₁₀ via beta radiation (http://www.fepam.rs.gov.br/qualidade/boletim_ar_automatica_detalhe.asp). The air samplings were carried out between August of 2006 and January of 2007.

2.2 Inorganic and organic particulate matter sampling

The inorganic and organic samplers were connected through a hose with a metallic adapter in the shape of a “Y” for division of the flow, to a mechanical pump, operating with a 20 L/min flow, as shown in figure 1. The inorganic and organic compounds were sampled simultaneously. Both samplers were installed at a height of 2 meters above the ground and were substituted every other day. This period for exchanging the samplers was based on a study of the air pollution in the city of São Paulo (Castanho and Artaxo, 2001). In the São Paulo case, the samplers were changed every 12 hours, since the saturation of the filters leads to a reduction in the air flow, compromising the cutoff diameter. Taking into account the size of the city of Caxias do Sul, its fleet of vehicles and the number of industries compared to those of the city of São Paulo, the sampling

period was taken to be from two to three days, since the problem of air pollution in Caxias do Sul is not so significant as in the metropolitan region of São Paulo.

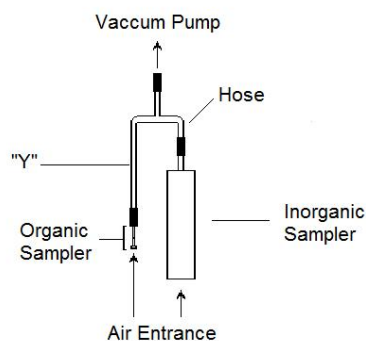


Figure 1 - The inorganic and organic samplers

2.3 Inorganic particulate matter sampling and characterization

The inhalable particulate matter was sampled using stacked filter units (SFU) (Parker et al., 1977; Hopke et al., 1997) on 47mm diameter nuclepore polycarbonate filters, in two separate size fractions (John et al., 1983). The inlet has an impactor stage designed to have 50% collection efficiency at 10 mm equivalent aerodynamic diameter. The coarse particles ($2.5 < d_p < 10 \mu\text{m}$) were collected in an $8.0 \mu\text{m}$ pore size filter while fine particles ($d_p < 2.5 \mu\text{m}$) were collected on $0.4 \mu\text{m}$ pore size filters. Mass concentrations of the fine and coarse modes were obtained gravimetrically with a 1 mg sensitivity electronic microbalance, in a controlled atmosphere room (20°C , 50% relative humidity, with fluctuations less than 10% of these set points). The filters were equilibrated in this room for 24 h before weighing. Electrostatic charges were controlled using radioactive sources. The concentration of BC on the fine fraction of the SFU was determined using a reflectance technique (Reid et al., 1998) that was calibrated using Monarch soot carbon standard in a smoke stain reflectometer, from Diffusion Systems, model M43D. These analyses were carried out at the laboratories of the Grupo de Estudos de Poluição do Ar of the Instituto de Física of the Universidade de São Paulo (GEPA-IFUSP).

2.4 Organic particulate matter sampling and characterization

The cartridge for the organic compound extraction is made from a polyethylene syringe, stuffed with 1 g of cotton previously purified. This system of extraction is carried out according to the same principles applicable to solid phase extraction (SPE). The only difference is that, in this case, the mobile phase and the sample are the air that is forced to pass through the cartridge. For analysis the cartridges were covered with aluminum foil and stored at low temperature (4°C) until the moment of extraction. The compounds that were adsorbed in the cartridges had been eluted with 5 mL of diclorometane, and the organic fractions were immediately analyzed by gas chromatography with a flame ionization detector (GC/FID). The analyses for gas chromatography with detection via mass spectrometry (GC-MS) were carried out in the Analytical Center of the Centro Tecnológico of the Universidade Regional Integrada do Alto Uruguai e das Missões

(URI-Campus de Erechim) in an equipment Shimadzu GC-MS QP 5050. The instrumental analyses of gas chromatography with flame ionization detector (GC/FID) were carried out in the Laboratório de Saneamento (LASAN) of the Instituto de Saneamento Ambiental (ISAM) of the Universidade de Caxias do Sul (UCS) in a Perkin Elmer GC Autosystem XL chromatographer, under identical conditions to those used in the GC/FID, except for the parameters used for detection via mass spectrometry.

3. Results

The variation of the concentration of fine and coarse particulate matter ($PM_{2.5}$ and PM_{10}) is presented in figure 2 while the variation of the concentration of fine and coarse black carbon (FBC and CBC) is presented in figure 3.

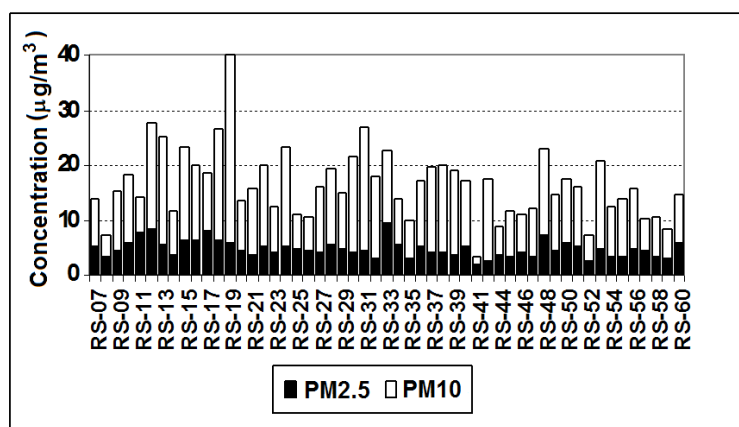


Figure 2 - Variation of the concentration of fine and coarse particulate matter ($PM_{2.5}$ and PM_{10}) during sampling period

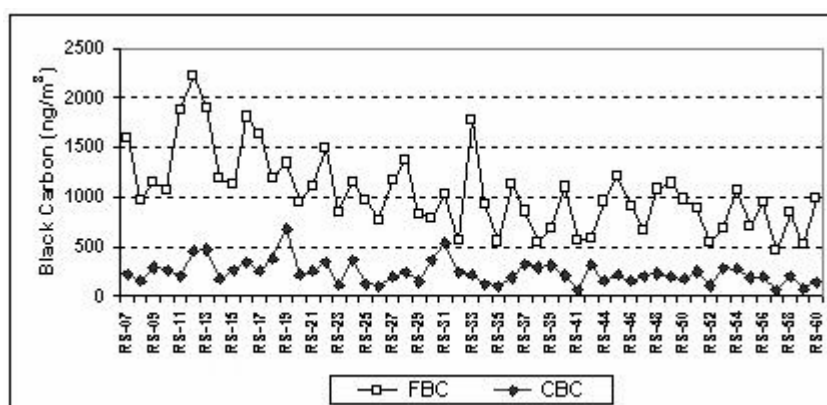


Figure 3- Variation of the concentration of fine and coarse black carbon (FBC and CBC) during the sampling period

These data represent the variation of these concentrations in the sampling period i.e., August of 2006 to January of 2007. The acronyms on the horizontal axis of these figures represent the codifications of the samples. This codification was chosen, instead of the chronological order of sampling, to make the interpretation of the results more understandable.

A typical chromatogram of the organic fraction of sampled air is shown in figure 4. The normalization of the areas under the chromatographic peaks by a tool of the operating software, allows one to determine the approximate concentrations of the detected compounds (Nascimento et al., 2003). So in this context, it is possible to relate the increase or reduction of the area of a chromatographic peak of a particular compound, with the increase or reduction of its concentration in the sample. The identification of the chromatographic peaks (library of mass spectra of system CG/MS), with match quality greater or equal to 90%, is also presented in figure 4.

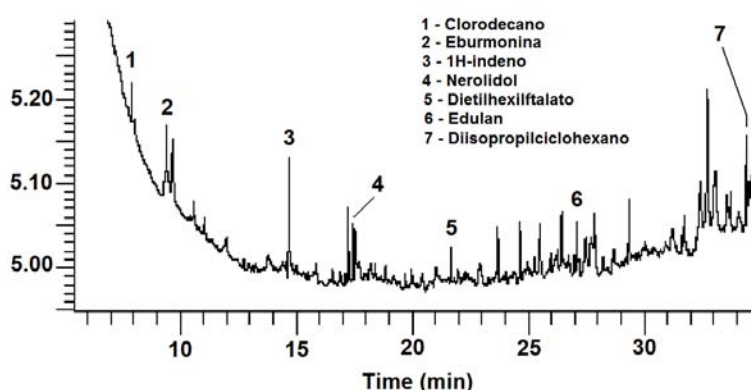


Figure 4 - Chromatogram of the organic fraction of sampled air

Data in table 1 show that the date of detection corresponding to the smallest areas of the compounds 1H-indeno, neridol and dietilhexilftalato coincide with the date of maximum concentration of PM₁₀. On the other hand, the date of detection of the highest concentrations of neridol and dietilhexilftalato match the date of minimum concentration of PM₁₀. These results suggest a possible effect of adsorption of organic compounds on the surface of the PM₁₀. According to Andrade and co-workers (1994) approximately 59% (m/m) of the PM₁₀ corresponds to the dust of the ground that is composed basically of silica (SiO₂). The silica, in its purified form, is a very well known adsorbent, used for organic compound retention in liquid chromatography preparations. In this way, heterocyclic organic compounds, with a heteroatom external to the ring (as 1H-indeno, neridol and dietilhexilftalato) are more susceptible to the adsorption effect, probably in function of their low polarity. According to Andrade and collaborators (1994), the concentration in mass of dust from the ground in the PM_{2.5} is only 28% and, obviously, the amount of silica is still smaller. These facts can explain the very low or

almost nonexistent adsorption of organic compounds in the PM_{2.5}. Another factor that contributes to the adsorption of organic compounds by the particulate matter is the size of particle, which varies from 2.5 to 15 µm in PM₁₀ and is smaller than 2.5 µm in the PM_{2.5} (Andrade et al., 1994; Castanho and Artaxo, 2001). In this context, it is possible that, due to their smaller particle size, the PM_{2.5} does not adsorb or adsorbs with greater difficulty, organic molecules that are, normally, sufficiently voluminous

Table 1. Relation between minimum and maximum concentrations of inorganic particulate material and volatile organic compounds.

<i>Inorganic Particulate Matter</i>	<i>Maximum Concentration</i>	<i>Date</i>	<i>Minimum Concentration</i>	<i>Date</i>
PM _{2.5}	9.306 µg/m ³	30/10	1.908 µg/m ³	18/10
PM ₁₀	34.219 µg/m ³	27/09	1.429 µg/m ³	18/10
FBC	2221.9 ng/m ³	13/09	456.8 ng/m ³	02/01
CBC	681.1 ng/m ³	27/09	61.9 ng/m ³	18/10

<i>Volatile Organic Compounds</i>	<i>Maximum Area^a (au)</i>	<i>Date</i>	<i>Minimum Area^a (au)</i>	<i>Date</i>
Clorodecano	14.43	23/09	739.94	27/10
Eburnamonine	7.97	06/10	14141.89	13/09
1H-indeno	6.1	27/09	440199.4	23/10
Neridol	3.94	27/09	2201.71	18/10
Dietilhexilftalato	0.87	27/09	1466.59	18/10
Edulan 1	22.83	06/09	9264.07	25/10
Metilenofenol	76.03	06/09	699.55	11/10

^aArea under the cromatograph peak,

Still in Table 1, one can observe a coincidence between the dates of maximum concentrations of eburnamonine and BCF, suggesting that, in this case, the adsorption effect does not occur or it is not significant. Up to a certain point this is an unexpected result, since the BC particles are formed by nets of aromatical rings linked by short aliphatic chains or by sulfur or oxygen atoms (Song and Peng, 2007), similar to the structure of eburnamonine.

The variation of the area under the chromatograph peak of each VOC identified (library of system GC-MS), during the whole sampling period, is presented in figure 5. Two important aspects seen in figure 5 are: (i) the regularity of detection of, practically, all the monitored compounds, obeying a pattern of minimum and maximum emissions that probably match with periods of lesser or greater industrial activity in the region studied; (ii) higher regularity of detection of metylenofenol.

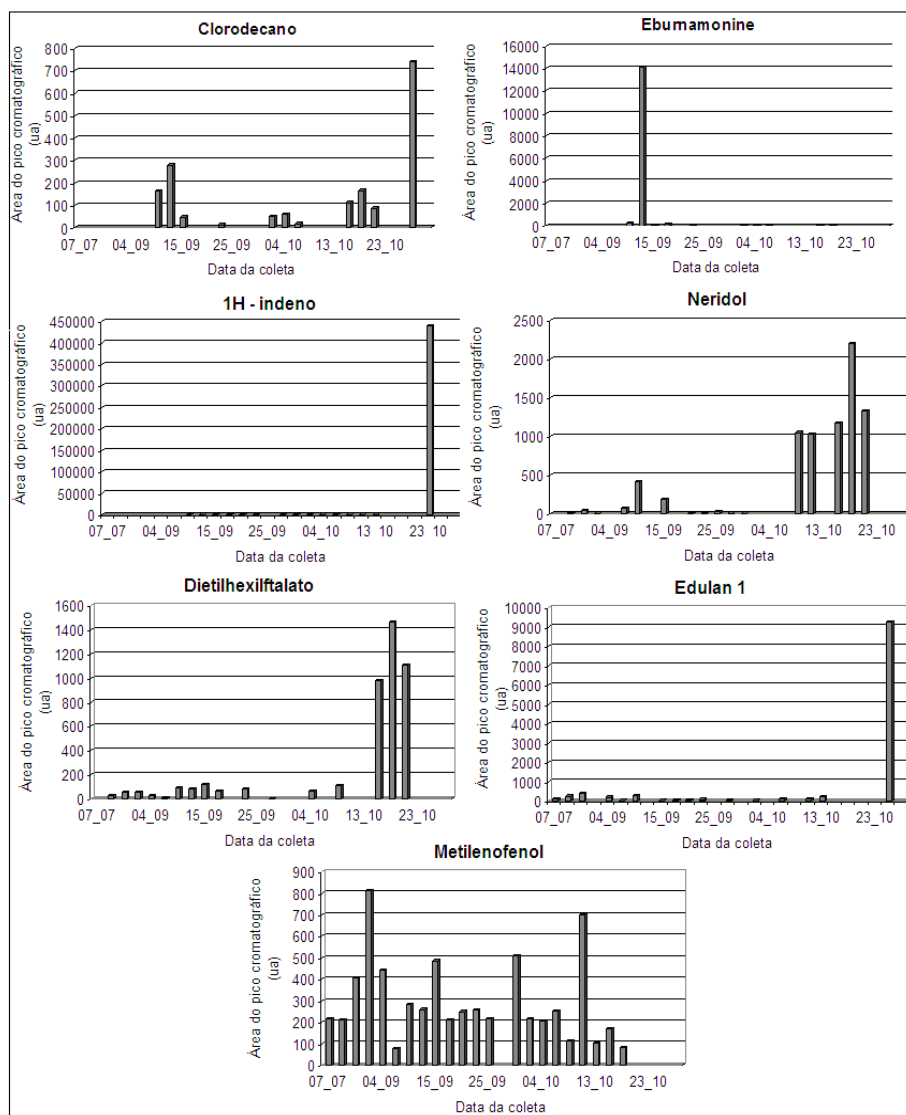


Figure 5 - Variation of the area under the chromatograph peak of each VOC identified

4. Conclusions

The preliminary results of this work suggest that, for some organic compounds, there is an adsorption effect by the coarse particulate matter. In particular, this effect is very pronounced for two organic compounds (neridol and diethylhexilftalato). The constant presence of admittedly carcinogenic compounds (such as clorodecano and diisopropilciclohexano) or compounds suspected of having this effect (diethylhexilftalato) is particularly important. All these substances present high solubility in adipose tissue, that is, they cause a severe effect of bioaccumulation.

5. Acknowledgments

V. Villas-Boas, L. Moratelli and I. Nascimento would like to thank: GEPA-IFUSP for loaning the equipments which made possible part of this research; CNPq, FAPERGS and UCS for financial support; and F.P. Missell for revisions of the manuscript.

6. References

- Alves, C., C. Pio, P. Gomes, 2006,, Determinação de hidrocarbonetos voláteis e semi-voláteis na atmosfera, *Quim. Nova* 29 (3), 477.
- Andrade, M. F., C. Orsini, W. Maenhaut, 1994, Relation between aerosol sources and meteorological parameters for inhalable atmospheric particles in Sao Paulo city, Brazil, *Atmospheric Environment*, 24 (14) 2307.
- Castanho, A.D.A. and P. Artaxo, 2001, Wintertime and summertime Sao Paulo aerosol source apportionment study, *Atmospheric Environment*, 35 (29) 4889.
- Christian, G.D., 1994, *Analytical Chemistry*, 5th ed., John Wiley & Sons, USA.
- Hopke, P.K., Y. Xie, T. Raunema, S. Biegalski, S. Landsberger, W. Maenhaut, P. Artaxo, and D. Cohen, 1997, Characterization of the Gent Stacked Filter Unit PM10 Sampler, *Aerosol Science and Technology*, 27, 726.
- John, W., S. Hering, G. Reischl and G. Sasaki, 1983, Characteristics of nuclepore filters with large pore size, II, filtration properties, *Atmospheric Environment* 17, 373.
- Loureiro, A.L., A.C. Ribeiro, P. Artaxo, M.A. Yamasoe, 1994, Calibration of reflectometer system to measure black carbon and field intercomparison in the Amazon Basin. 5th International Conference on Carbonaceous Particles in the Atmosphere, Berkeley, California, USA.
- Macchione, M., A.P. Oliveira, C.T. Gallafrio, F.P. Muchão, M.T. Obara, E.T. Guimarães, P. Artaxo, M. King, G. Lorenzi-Filho, V.C.B. Junqueira, P.H.N. Saldiva, 1999, Acute effects of inhalable particles on the frog palate mucociliary epithelium. *Environmental Health Perspectives* 107 (10), 829.
- Nascimento, I.F., C. von Muhlen, E.B. Caramão. 2001, *Quim. Nova*, 24, 554.
- Nascimento, I.F.; C. von Muhlen, P. Schossler, E.B. Caramão, 2003, *Chemosphere* 50 657.
- Parker, R.D., G.H. Buzzard, T.G. Dzubay, J.P. Bell, 1977. A two stage respirable aerosol sampler using Nuclepore filters in series. *Atmospheric Environment*, 11, 617.
- Reid, J.S., P.V. Hobbs, C. Lioussé, J.V. Martins, R.E. Weiss, T.F. Eck, 1998, Comparison of techniques for measuring short-wave absorption and black carbon content of aerosol from biomass burning in Brazil, *Journal of Geophysical Research* 103 (D24), 32031.
- Song, J. and I. Peng, 2007, Characterization of black carbon materials using pyrolysis-GC-MS technology. *Geophysical Research Abstracts*, 9, 10082.
- Vasconcellos, P.C., L.R.F.Carvalho and C.S. Pool, 2005, Volatile Organic Compounds Inside Urban Tunnels of São Paulo City, Brazil, *J. Braz. Chem. Soc.*, 16 (6A) 1210.